



APLF (phospho Ser116) Polyclonal Antibody

Catalog No	YP-Ab-01414
Isotype	IgG
Reactivity	Human;Mouse
Applications	IHC;IF;ELISA
Gene Name	APLF
Protein Name	Aprataxin and PNK-like factor
Immunogen	The antiserum was produced against synthesized peptide derived from human APLF around the phosphorylation site of Ser116. AA range:82-131
Specificity	Phospho-APLF (S116) Polyclonal Antibody detects endogenous levels of APLF protein only when phosphorylated at S116.
Formulation	Liquid in PBS containing 50% glycerol, 0.5% BSA and 0.02% sodium azide.
Source	Polyclonal, Rabbit,IgG
Purification	The antibody was affinity-purified from rabbit antiserum by affinity-chromatography using epitope-specific immunogen.
Dilution	IHC: 1/100 - 1/300. ELISA: 1/5000.. IF 1:50-200
Concentration	1 mg/ml
Purity	≥90%
Storage Stability	-20°C/1 year
Synonyms	APLF; C2orf13; PALF; XIP1; Aprataxin and PNK-like factor; Apurinic-apyrimidinic endonuclease APLF; PNK and APTX-like FHA domain-containing protein; XRCC1-interacting protein 1
Observed Band	
Cell Pathway	Nucleus . Chromosome . Cytoplasm, cytosol . Localizes to DNA damage sites (PubMed:18474613, PubMed:18172500, PubMed:21211721, PubMed:23689425). Accumulates at single-strand breaks and double-strand breaks via the PBZ-type zinc fingers (PubMed:18172500)..
Tissue Specificity	Testis,
Function	domain:The FHA-like domain mediates interaction with XRCC1 and XRCC4.,function:Involved in single-strand and double-strand DNA break repair.,PTM:Phosphorylated in an ATM-dependent manner upon double-strand DNA break.,similarity:Contains 1 FHA-like domain.,similarity:Contains 2 C2H2-type zinc fingers.,subcellular location:Colocalizes with XRCC1 at sites of DNA damage.,subunit:Interacts with XRCC1. May also interact with XRCC4 and XRCC5.,
Background	C2ORF13 is a component of the cellular response to chromosomal DNA single- and double-strand breaks (Iles et al., 2007 [PubMed 17353262]).[supplied by OMIM, Mar 2008],

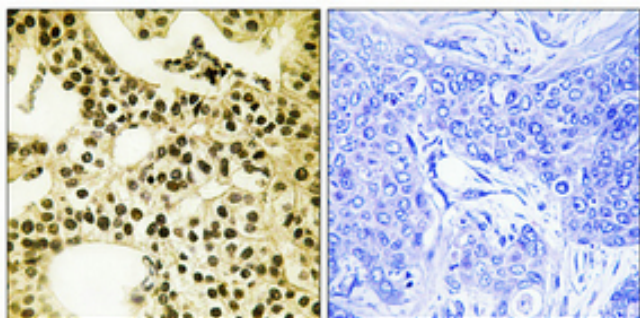
**matters needing attention**

Avoid repeated freezing and thawing!

Usage suggestions

This product can be used in immunological reaction related experiments. For more information, please consult technical personnel.

Products Images



Immunohistochemical analysis of paraffin-embedded Human breast cancer. Antibody was diluted at 1:100(4° overnight). High-pressure and temperature Tris-EDTA, pH8.0 was used for antigen retrieval. Negative control (right) obtained from antibody was pre-absorbed by immunogen peptide.